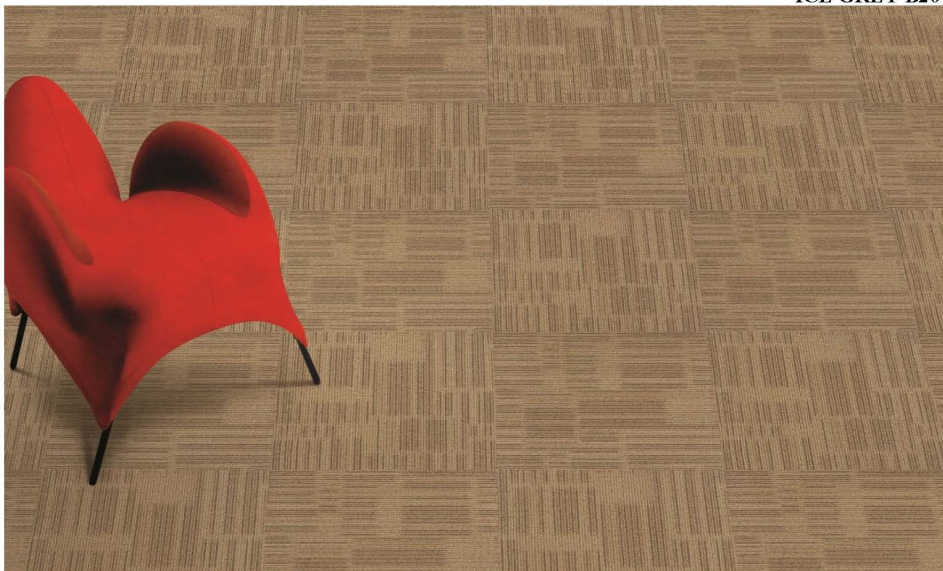


PISA 1 & 2

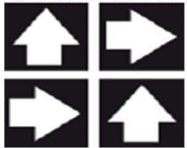


ICE GREY B204



SESAME S104

RECOMMENDED INSTALLATION METHODS:

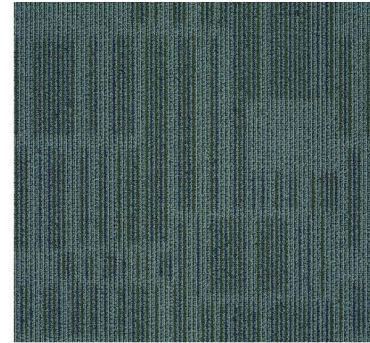


QUARTER-TURN



039-025-2280

Environmentally Preferred Carpet.



MUSK A106



SESAME A104



ICE GREY B204



STORM NIGHT B201

STYLE NAME:	Pisa 1&2
CONSTRUCTION:	Tufted Textured Loop
YARN:	Solution Dyed BCF
COMPONENT:	100% BCF Synthetic Fiber
GAUGE PER INCH:	1/12"
PILE HEIGHT:	4.0mm +/- 0.3mm
TOTAL THICKNESS:	6.0mm +/- 0.3mm
PILE WEIGHT:	750g/m ²
TOTAL WEIGHT:	4800g/m ²
TILE BACKING:	PVC with Glass Fiber
PRIMARY BACKING CLOTH:	Non-woven Polyester Spunbonded
TILE SIZE:	50cm x 50cm
PACKING:	20 PCS

PERFORMANCE	
ELECTROSTATIC PROPENSITY:	AATCC 134 1996
FLAMMABILITY:	ASTM D 2859 96 Pill Test
TUFT BIND:	ASTM D 1335
AACHEN DIMENSIONAL STABILITY:	ITTS 004
ACCELERATED SOILING:	ASTM D 6540
COLORFASTNESS TO LIGHT:	AATCC 16
ROLL CHAIR TESTING:	ITTS 205

* AS IN ALL QUALITY CARPETS, COLOURS ARE SUBJECT TO DYELOT VARIATIONS.