

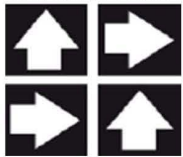


MILK TEA WT01

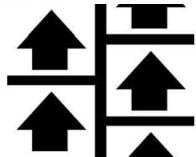


COFFEE CREAM WT09

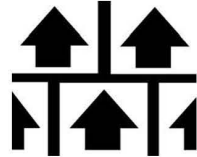
RECOMMENDED INSTALLATION METHODS:



QUARTER-TURN



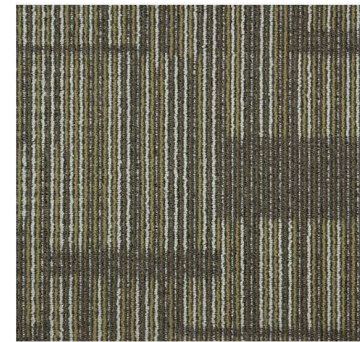
ASHLAR



BRICK



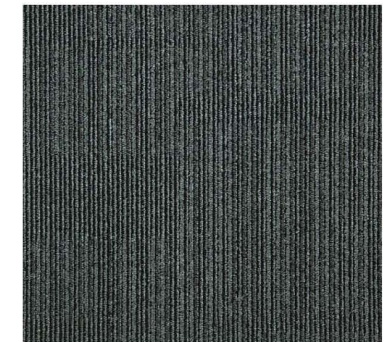
MILK TEA WT01



OLIVE BLEND WT02



SPA POOL WT05



COFFEE CREAM WT09

**World Trade**  
**Multi-level Loop piles**  
**Nylon**  
**Solution Dyed**  
**1/12"**  
**4mm +/- 5%**  
**6.5mm +/- 5%**  
**550 g/m<sup>2</sup>**  
**4600 g/m<sup>2</sup>**  
**PVC**  
**50cm x 50cm**  
**20 PCS**

**PERFORMANCE**

**ELECTROSTATIC PROPENSITY:** NO, WT-2005-0121 LEVEL U30 ≤ 0.1 (GB/T 18044-2000)  
**LIGHT COLORFASTNESS:** ≥4.0 (GB/T 11746-89)  
**CROCKING COLORFASTNESS:** ≥4.0 (GB/T 11746-89)  
**FIRE RETARDANT:** NO, 520051 (GB/T 14768-93)  
**ENVIRONMENTAL:** NO, WT-2005-011-AAA LEVEL  
**PROTECTION:** (GB 18587-2001)



039-025-2280

Environmentally Preferred Carpet .

\* AS IN ALL QUALITY CARPETS, COLOURS ARE SUBJECT TO DYELOT VARIATIONS.